

**RAYMOND WEIL S.A.**

Avenue Eugène-Lance 36-38  
P.O. Box 1569  
1211 Geneva 26  
Switzerland  
Tel: +41 (0) 22 884 00 55  
Fax: +41 (0) 22 884 00 50



**GENERAL INFORMATION**

[info@raymond-weil.ch](mailto:info@raymond-weil.ch)

**AFTER-SALES SERVICE**

[customer-service@raymond-weil.ch](mailto:customer-service@raymond-weil.ch)

**WEBSITE**

[www.raymondweil.com](http://www.raymondweil.com)



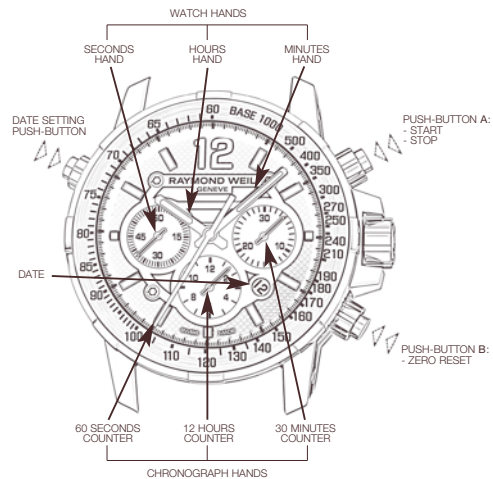
**RAYMOND WEIL**  
GENEVE

INSTRUCTIONS FOR USE

**NABUCCO**  
**SELF-WINDING CHRONOGRAPH**

## NABUCCO CHRONOGRAPH

### DESCRIPTION OF THE DIAL

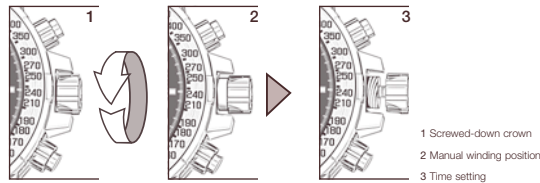


RAYMOND WEIL **Nabucco** chronograph is equipped with a tachymetric scale, enabling the measurement of speed in km/h.

### CHANGING THE DATE AND SETTING THE TIME

- 1 Screwed-down crown
- 2 Manual winding position
- 3 Time-setting

Your RAYMOND WEIL **Nabucco** is fitted with a screw-down crown. Before winding the watch or setting the time, it is therefore necessary to unscrew the crown by pulling it straight out and turning it anti-clockwise. The crown will then be released by a spring.



### SETTING THE TIME

In order to adjust the time, pull the crown out to position 3 and turn it forwards or backwards until the hands indicate the desired time.

After setting the time, always push the crown back in to position 1, in order to restart the hands and press lightly on the crown, while turning it clockwise, and screw it back in gently in order to preserve your watch's water-resistance.

### CHANGING THE DATE

In order to adjust the date rapidly, unscrew the push-button at 10 o'clock by pulling it straight out and turning it anti-clockwise. Then, press it until the required date appears in the window at 4:30.



The automatic date correction takes place as the hours hand passes midnight. During this operation, your watch will continue to function and so will not need to be reset. Do not change the date when the watch is showing a time between 10 pm and 2 am. The watch's automatic date-change mechanism engages during this time period and the movement could be damaged. After completing these settings, press lightly on the crown, while turning it clockwise, and screw it back in gently in order to preserve your watch's water-resistance.

### USE OF THE CHRONOGRAPH

The chronograph function can only be used when the crown is in position 1.

#### START

Press push-button A to activate the seconds hand of the chronograph. If the timed activity lasts longer than 60 seconds, the time elapsed will appear progressively on the minutes counter and on the hours counter.

#### STOP

Press push-button A a second time to stop the chronograph and obtain the time that has elapsed (in hours, minutes and seconds). By pressing push-button A again, timing is restarted immediately. Thus you can measure several consecutive time durations.

#### RESETTING TO ZERO

After having stopped the chronograph by pushing on push-button A, press push-button B in order to reset all the chronograph counters to zero. Your watch is now ready to start timing again.

After completing this resetting, press lightly on the crown, while turning it clockwise, and screw it back in gently in order to preserve your watch's water-resistance.

